



Lubrication Fittings Accessories

Plugs

Closes an opening where a fitting is no longer being used.

Product #	Description
1480	1/8" NPTF Square Head
17831	1/8" NPTF Hex Socket
170008	1/4" NPTF Hex Socket
328224	1/4"-28 Taper Thd. (SAE-LT) Hex Head
328435	1/4"-28 Taper Thd. (SAE-LT) Thread Forming Hex Head
369588	1/8"-27 Thread Forming Hex Head

Bushings

Extra heavy-duty, high-pressure units are constructed of steel and are bright zinc-plated to resist corrosion.

Product #	Male	Female
45120	1/4" NPTF	1/8" NPTF
A112	3/8" NPTF	1/8" NPSI
40996	3/8" NPTF	1/4" NPTF
A113	1/2" NPTF	1/8" NPSI
51891	1/2" NPTF	1/4" NPTF
131586	1/2" NPTF	3/8" NPTF
51643	3/4" 11-1/2" NH*	1/4" NPTF
320353	1" NPTF	3/4" NPTF
320354	1" NPTF	1/2" NPTF
320356	3/4" NPTF	3/8" NPTF
328207	1-1/2" NPTF	1" NPTF
338552	2" NPT	3/4" NPT

IMPORTANT INFORMATION

* Garden hose thread

Lubrication Fittings Accessories

Couplers

Hydraulic couplers provide quick, positive and leakproof connection with hydraulic fittings. Hydraulic couplers are used with 1/4"-28 taper thread, 1/4"-28 straight, 1/8" PTF, 1/4" PTF, thread-forming, drive, metric, rivet, leak-proof, special thread, Monel and stainless steel fittings.

Hydraulic Couplers

Product #	Type	Thread	Pressure	Other Features
6304-B**	Standard	1/8" NPTF(f)	10,000 psi	N/A
6304-C	Standard	1/8" NPTF(f)	10,000 psi	Equipped with built-in check valve
308730**	Narrow	1/8" NPTF(f)	10,000 psi	N/A
308730-A	Narrow	1/8" NPTF(f)	10,000 psi	Equipped with built-in check valve
B330070	Narrow	1/8" NPTF(f)	10,000 psi	High-pressure metal seal, Blister packed
B154	Narrow	1/8" NPTF(f)	7,500 psi	N/A
322120	Narrow	1/8" NPTF(f)	10,000 psi	90°

360° Swivel Hydraulic Couplers *

Product #	Type	Thread	Length	Pressure	Other Features
6509-D**	Standard swivel	1/8" NPTF	3-1/2"	10,000 psi	Metal seal
6509-E**	Narrow diameter swivel	1/8" NPTF	4"	10,000 psi	Rubber seal

Air Couplers

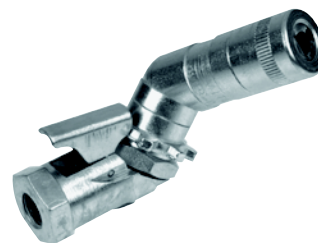
Product #	Type	Thread	Length	Pressure
307111	Standard	1/4" NPTF(m)	N/A	300 psi
307112	Standard	1/4" NPTF(f)	N/A	300 psi
307115	Standard (Adapter)	1/4" NPTF(m)	N/A	300 psi
307116	Standard (Adapter)	1/4" NPTF(f)	N/A	300 psi



308730-A



B154



6509-D

IMPORTANT INFORMATION

* Products will lock in eight different positions

** Available in blister packs

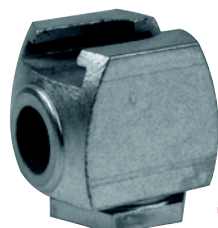
Lubrication Fittings Accessories

Couplers

Button head couplers are used with standard or giant button head fittings only.

Standard and Giant Button Head Couplers

Product #	Type	Thread	Pressure
42030	Standard Pull-On	7/16"-27 NS-2(f)	10,000 psi
42030-A	Standard Pull-On	1/8" NPTF(f)	10,000 psi
42031-A	Standard Push-On	1/8" NPTF(f)	10,000 psi
304300	Giant Pull-On	7/16"-27 NS-2(f)	15,000 psi
304300-A	Giant Pull-On	1/8" NPTF(f)	15,000 psi
319702	Giant Pull-On	1/4" PTF SAE Short(f)	15,000 psi
304301	Giant Push-On	7/16"-27 NS-2(f)	15,000 psi



42030

Pin type couplers provide quick, positive and leakproof connection with pin type fittings.

Pin Type Couplers

Product #	Thread
VB942	1/8" NPTF(f) w/o wing
50491	1/8" NPTF(m) w/ wing
51185	1/8" NPTF(f) w/ wing



50491

Flush type couplers are used with flush type fittings only.

Flush Type Nozzle Couplers

Product #	Type	Thread
314150*	Midget	1/8" NPTF(f)
Z737	Standard	1/8" NPTF(f)



Z737

IMPORTANT INFORMATION

* Used with 1877 flush type fitting page 21

Zerk-Mate Grease Fitting / Joint Cleaner

This professional heavy-duty tool is perfect for unplugging clogged grease fittings. A light viscosity oil is injected into the faulty joint, loosening grease and allowing for new grease to enter. This tool saves the time of replacing fittings and joints and is also available in a pocket-sized model on a blistercard.



339841

340004

Product #	Description	Weight
339841	Heavy-Duty Zerk-Mate	1.5 lb.
340004	Pocket-Sized Zerk-Mate	8 oz.

Lubrication Fittings Accessories

Elbow Bodies

Elbow bodies change the angle of a fitting to be attached to a bearing.



43706



51943

Product #	Description	Angle	Overall Length	Thread Length	Shank Length
43706	1/8" NPTF(f) x 1/8" PTF SAE Short(m)	90°	1-1/8"	17/64"	17/32"
43716	1/8" NPTF(f) x 1/8" PTF SAE Short(m)	45°	1"	7/32"	7/16"
44701	1/8" NPTF(f) x 1/8" PTF SAE Short(m)	90°	1"	7/32"	7/16"
43718	1/8" NPTF(f) x 1/4" PTF SAE Short(m)	90°	1-3/16"	13/32"	5/8"
43748	1/4" NPTF(f) x 1/4" PTF(m)	90°	1-11/32"	13/32"	19/32"
369586	1/4"-28 Taper Thread SAE-LT x 1/4"-28 UNF-2B	65°	45/64"	19/64"	1/5"
369594	1/4"-28 Taper Thread SAE-LT x 1/4"-28	45°	45/64"	19/64"	1/5"

Product #	Thread(m)	Thread(f)	Other Features
51942	1/4"-28 Taper (SAE-LT)(m)	1/8" NPTF(f)	Straight
51943	1/4"-28 Taper (SAE-LT)(m)	1/8" NPTF(f)	90°
310912	1/4"-28 Taper (SAE-LT)(m)	1/8" NPTF(f)	45°
306722	1/8" NPTF	1/4" NPTF	Straight

Easy-Out Fitting Tool

Easy-out fitting tool is an all-in-one tool to extract broken fittings, rethread holes and install new straight and angle type fittings.

Product #	For Fittings with Thread
B315790	1/4"-28 Taper Thread
B315791	1/8" NPTF



B315790



Grease Guns

Introduction

Alemite Grease Guns and Accessories are constructed to withstand the rigors of the most demanding applications. Built using only the highest-grade materials and time-tested designs. Alemite Grease Guns are guaranteed to perform.

Alemite offers the widest selection of grease guns on the market. We continue to innovate this product category and were the first to offer the 14.4V Battery-Powered Grease Gun. We will continue our commitment to quality and innovation on the full range of products.



Grease Guns

General Information

Durability and quality are built into every gun we produce, from our innovative cordless grease guns to our dependable high-pressure grease guns. Whether you're looking to make your factory maintenance procedures more efficient or you desire the ability to quickly service equipment in the field, Alemite has the grease gun you need.

Alemite Grease Guns include:	
Cordless Series	41
Standard-Duty Series.....	42
Professional Series.....	44
Heavy-Duty Series.....	47
High-Pressure Series	49
Specialty Series	50
See Also:	
Grease Guns Accessories.....	52



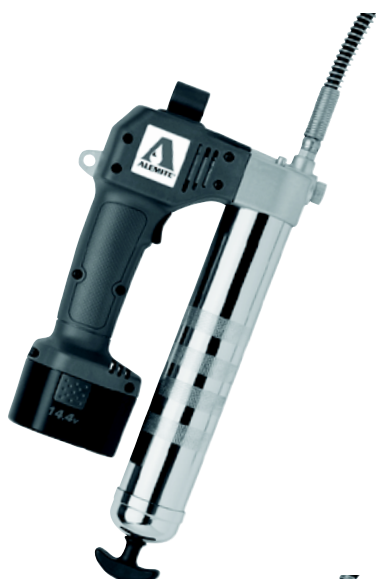
Grease Guns

Cordless Series

Alemite has developed the most powerful and innovative cordless grease guns in the market with our 585 14.4-volt model and our 575 12-volt model. Designed with the user in mind, these durable products offer you the ability to lubricate your equipment more effectively. Whatever the application, our dependable guns can save you time and money with their ease of handling and efficient operation. Also available in European versions.

FEATURES:

- Lightweight construction, ergonomic design and optional carrying strap make lubrication easy and reduce physical strain
- Chrome-plated barrel offers unmatched durability
- Patented automatic universal follower eliminates need to flip when changing load method
- Three-foot ultra-flexible hose with grease coupler can handle 12,000 psi
- Air bleed valve simplifies air removal during loading
- High-flow check valve optimizes flow characteristics
- Airflow is controlled to extend motor life
- Multiple loading options make refilling easy and efficient



585 Series

14.4-Volt Cordless Grease Gun

- One fully charged battery delivers up to 10 cartridges of grease
- Develops 10,000 psi
- 3-way loading (cartridge, bulk, and suction) - 14-oz. cartridge
- 5 oz. / min @ 1,000 psi flow rate

Product #	Input Charger	Battery
585-A	120 Volt	One 14.4 Volt
585-B	120 Volt	Two 14.4 Volt
585-C	Europe and Australia	One 14.4 Volt
585-D	Europe and Australia	Two 14.4 Volt
585-E	UK, Africa and Hong Kong	One 14.4 Volt
585-F	UK, Africa and Hong Kong	Two 14.4 Volt



575 Series

12-Volt Cordless Grease Gun

- One fully charged battery delivers up to 6 cartridges of grease
- Develops 6,500 psi
- 3-way loading (cartridge, bulk, and suction) - 14-oz. cartridge
- 5.25 oz. / min @ 1,000 psi flow rate

Product #	Input Charger	Battery
575-A	120 Volt	One 12 Volt
575-B	120 Volt	Two 12 Volt
575-C	Europe and Australia	One 12 Volt
575-D	Europe and Australia	Two 12 Volt
575-E	UK, Africa and Hong Kong	One 12 Volt
575-F	UK, Africa and Hong Kong	Two 12 Volt

IMPORTANT INFORMATION

See page 53 for accessories.

Grease Guns

Standard-Duty Series

Alemite Standard-Duty Series Grease Guns are designed to handle most low- and medium-pressure manual lubrication applications. These guns are available in push, lever or pistol style.

Alemite Standard-Duty Series Grease Guns can be used on a wide range of applications, including:

- Industrial applications
- Automobiles and trucks
- ATVs and snowmobiles
- Trailers
- Boats
- Lawn and garden equipment
- Farm equipment



PHOTOGRAPH
ACTUAL SIZE

F107

Push-N-Lube

Disposable push grease gun

FEATURES:

- 3,700 psi pressure capability
- Delivers up to 2 oz. of NLGI #2 grease
- Versatile one-hand operation
- Universal nozzle for standard grease fittings
- Sealed design prevents leaks
- Disposable – simply throw it away when empty
- Ideal for toolboxes
- Must order in quantities of 24

F107-M

Marine Push-N-Lube

Disposable push grease gun

FEATURES:

- 3,700 psi pressure capability
- Delivers up to 2 oz. of marine-grade grease
- Versatile one-hand operation
- Universal nozzle for standard grease fittings
- Sealed design prevents leaks
- Polycarbonate plastic construction will not rust like metal guns
- Disposable – simply throw it away when empty
- Ideal for boats and trailers
- Must order in quantities of 24



Grease Guns

Standard-Duty Series



F101

Lever Grease Gun

FEATURES:

- Develops 4,300 psi
- 3-way loading – 14-oz. cartridge, suction or loader fitting
- Air vent (bleeder valve)
- Vinyl grip
- Whip hose is available

INCLUDED ITEMS:

- Rigid Extension and Coupler



F103

Pistol Grease Gun

FEATURES:

- Develops 4,500 psi
- 2-way loading – 14-oz. cartridge or suction
- Air vent (bleeder valve)

INCLUDED ITEMS:

- Rigid Extension and Coupler



F104

Mini Pistol Grease Gun

FEATURES:

- Develops 2,900 psi
- 2-way loading – 3-oz. cartridge or suction
- Small size fits easily into toolbox or storage compartment

INCLUDED ITEMS:

- 3-oz. Grease Cartridge, Rigid Extension and Coupler



F106

Standard Lever Grease Gun

FEATURES:

- Develops 8,000 psi
- 2-way loading – 14-oz. cartridge or suction
- Whip hose is available

INCLUDED ITEMS:

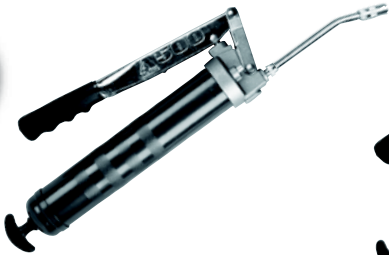
- Rigid Extension and Coupler

Grease Guns

Professional Series

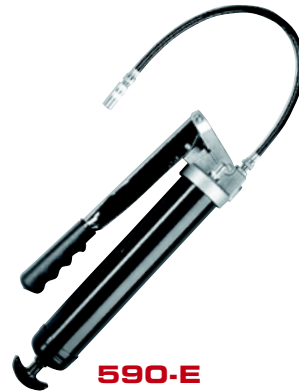
Alemite Professional Series Grease Guns are designed for the professional-grade user. These guns are available in lever and pistol grip styles and can develop pressures up to 10,000 psi.

44

**500****500-E**

FEATURES:

- 3-way loading: 14 oz. cartridge, suction or fast refill from Alemite Loader Pump (500, 500-E and 500-L only)
- 2-way loading: 14 oz. cartridge or suction load (590 & 590-E only)
- Air vent (bleeder valve)
- Vinyl handle cover provides a sure grip
- Die-cast aluminum head is rugged yet lightweight

**500-L****590****590-E**

Product #	Description	Pressure	Delivery	Cylinder Capacity	Included Items
500	Lever Gun	10,000 psi	1 oz. per 21 strokes	16 oz.	Rigid extension & coupler, loader fitting
500-E	Lever Gun w/Whip Hose	10,000 psi	1 oz. per 21 strokes	16 oz.	18" Whip hose & coupler, loader fitting
500-L	Lever High Volume Gun	10,000 psi	1 oz. per 21 strokes	24 oz.	Rigid extension & coupler, loader fitting
590	Lever Gun	10,000 psi	1 oz. per 21 strokes	16 oz.	Rigid extension & coupler
590-E	Lever Gun w/Whip Hose	10,000 psi	1 oz. per 21 strokes	16 oz.	18" Whip hose & coupler



Grease Guns

Professional Series

Alemite Professional Series Grease Guns are designed for the professional-grade user. These guns are available in lever and pistol grip styles and can develop pressures up to 10,000 psi.

FEATURES:

- Unique dual-leverage design allows choice between high-pressure or high-volume output
- 2-way loading: 14 oz. cartridge or suction load
- Air vent (bleeder valve)
- Vinyl handle cover provides a sure grip
- Die-cast aluminum head is rugged yet lightweight



525



550

Product #	Description	Pressure	Delivery	Cylinder Capacity	Included Items
525	Pistol Grip Gun	5,500 psi	High vol. mode: 1 oz. per 33 strokes High pressure mode: 1 oz per 63 strokes	16 oz.	Rigid extension & coupler
550	Pistol Grip Gun	5,500 psi	High vol. mode: 1 oz. per 33 strokes High pressure mode: 1 oz per 63 strokes	16 oz.	18" Flexible hose & coupler

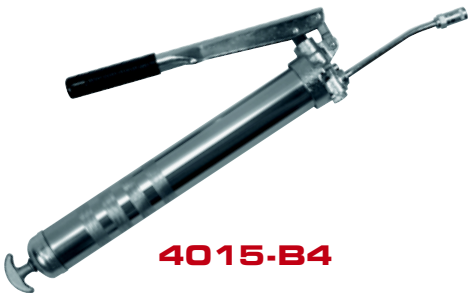
Grease Guns

High-Volume Professional Series

Alemite Professional Series Grease Guns are constructed to withstand even the most demanding environments. Designed for the professional-grade user, these guns are available in lever and pistol grip styles and can develop pressures up to 10,000 psi. Alemite has the widest selection of grease guns available to meet any industrial or automotive application.

FEATURES:

- High output per stroke
- Vinyl handle cover provides a sure grip
- Heavy-duty lever
- Cast-iron head provides extra durability
- 3-way loading: 14 oz. cartridge, suction or fast refill through loader fitting
- Patented follower allows cartridge or bulk loading without gun disassembly



Product #	Description	Pressure	Delivery	Cylinder Capacity	Included Items
4015-A4	High Volume Lever Gun	1,800 psi	1 oz. per 7 strokes	16 oz.	Rigid extension & coupler
4015-B4	High Volume Lever Gun	1,800 psi	1 oz. per 7 strokes	24 oz.	Rigid extension & coupler



Grease Guns

Heavy Duty Series

Alemite Heavy-Duty Series Grease Guns are designed for the lubrication professional and provide guaranteed performance in any industrial application. These guns operate in the most severe conditions and feature a dual-lever mechanism allowing for high-volume output or high-pressure delivery. Guns have die-cast steel heads, rugged body and follower construction to take on even the toughest lubrication tasks.

FEATURES:

- 3-way loading: 14 oz. cartridge, suction or fast refill from Alemite Loader Pump through loader fitting
- Air vent (bleeder valve)
- Vinyl handle cover provides a sure grip
- Die-cast steel head provides additional durability
- Zinc-plated finish
- Patented follower allows cartridge or bulk loading without gun disassembly
- Gun outlet: 1/8" NPTF



1056-S4



1056-SE4



1056-LE4

Product #	Description	Pressure	Delivery	Cylinder Capacity	Included Items
1056-S4	Heavy Duty Lever Gun	10,000 psi	High-Volume mode: 1 oz. per 16 strokes/ High Pressure mode: 1 oz. per 25 strokes	16 oz.	Extensions available*
1056-SE4	Heavy Duty Lever Gun	10,000 psi	High-Volume mode: 1 oz. per 16 strokes/ High Pressure mode: 1 oz. per 25 strokes	16 oz.	Rigid extension & coupler
1056-LE4	Heavy Duty Lever Gun	10,000 psi	High-Volume mode: 1 oz. per 16 strokes/ High Pressure mode: 1 oz. per 25 strokes	24 oz.	Rigid extension & coupler

IMPORTANT INFORMATION

* See page 54 for extensions.

Grease Guns

Heavy Duty Series

These heavy-duty models feature an extra-long solid lever for maximum leverage and 24-oz. bulk load capacity. Great for high-pressure/low-volume applications.

FEATURES:

- 3-way loading: 14 oz. cartridge, suction or fast refill from Alemite Loader Pump through loader fitting
- Air vent (bleeder valve)
- Cast-iron head provides additional durability
- Zinc-plated finish
- Patented follower allows cartridge or bulk loading without gun disassembly
- Gun outlet: 1/4" NPTF



6243-J3



6243-J3E



6679-J3



6679-J3E

Product #	Description	Pressure	Delivery	Cylinder Capacity	Included Items
6243-J3*	Heavy Duty Large Capacity Lever	10,000 psi	1 oz. per 20 strokes	24 oz.	Check valve & loader fitting
6243-J3E	Heavy Duty Large Capacity Lever	10,000 psi	1 oz. per 20 strokes	24 oz.	Rigid extension & coupler, loader fitting
6679-J3*	Heavy Duty High Volume Lever	5,000 psi	1 oz. per 10 strokes	24 oz.	Check valve & loader fitting
6679-J3E	High Volume Lever	5,000 psi	1 oz. per 10 strokes	24 oz.	Rigid extension & coupler, loader fitting

IMPORTANT INFORMATION

* See page 54 for extensions.



Grease Guns

High-Pressure Series

High-Pressure Series Grease Guns from Alemite will develop up to 15,000 psi and are designed to withstand harsh environments. These guns can also be used to dispense sealants and other similar fluids. These guns feature all-steel construction for durability and are guaranteed to perform.

FEATURES:

- Load through loader fitting via Alemite Loader Pump
- Air-Vent (bleeder valve)
- Cast-iron head provides additional durability
- Dispense even the most viscous lubricants
- Can be used with bulk or stick lubricants
- Extra-long solid lever for maximum leverage
- Zinc-plated finish
- Gun outlet: 1/4" NPTF
- Loader fitting and screw prime with spring-loaded feeder provide 20 or more strokes without re-priming



6268-2



325540-1



325540-2

Product #	Description	Pressure	Delivery	Cylinder Capacity	Included Items
6268-2	High Pressure Lever Gun	15,000 psi	1 oz. per 24 strokes	12 oz.	Carrying Strap
325540-1	High Pressure Lever Gun with hose assembly	15,000 psi	1 oz. per 24 strokes	12 oz.	Carrying Strap, Relief Valve, Giant Button Head Coupler, 2 Swivels (B52750 & B52752), High-Pressure "T" Gauge, Hose Assembly & Adapter
325540-2	High Pressure Lever Gun with 18" hose assembly & coupler	15,000 psi	1 oz. per 24 strokes	12 oz.	Carrying Strap, Saf-T-Vent™ Coupling, 2 Swivels (B52750 & B52752), High-Pressure "T" Gauge, Hose Assembly & Adapter

Grease Guns

Specialty Series

For over 85 years, Alemite has offered a range of specialty grease guns from screw types to suction guns as well as an oil-dispensing gun. These guns are perfect for a wide range of low-pressure industrial and automotive applications.

50



C600

Screw-Type Compressor Grease Gun

This original Alemite grease gun is designed for all types of pressure gun lubricants. Operate the gun by turning the screw handle to dispense lubricant.

FEATURES:

- Capacity: 8 oz.
- Outlet is 1/8" NPTF

REQUIRED ACCESSORY:

- Rigid Extension (339570) p.54 or Flexible Extension with Coupler (B6703-A) p.55



F100

Pneumatic Grease Gun

This 16-oz. capacity gun features air operation for easy dispensing of grease. Trigger press dispenses grease.

FEATURES:

- Develops 6,000 psi
- Delivery: 1 oz. per 7 cycles
- 3-way loading – 14-oz. cartridge, suction or fast refill from Alemite Loader Pump through loader fitting up to 16 oz.
- Air vent (bleeder valve)

INCLUDED ITEMS:

- Rigid Extension and Coupler



F105

Suction Grease Gun

Suitable for draining of non-corrosive lubricants.

FEATURES:

- Capacity: 16 oz.

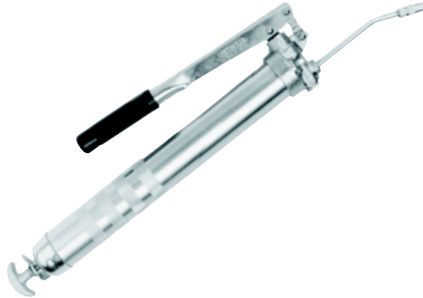
INCLUDED ITEMS:

- 12" Flexible Vinyl Hose



Grease Guns

Specialty Series



4035

Heavy-Duty Lever Oil Gun

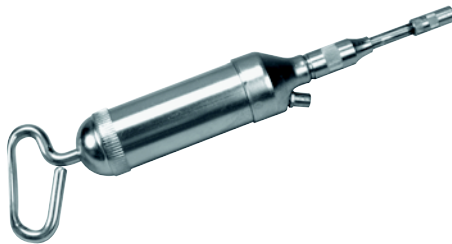
This 4035 gun is designed for use with oil. Use to lubricate bearings and slides or to precharge hydraulic cylinders. Load the gun by pouring oil directly into the cylinder.

FEATURES:

- Develops 1,800 psi
- Delivery: 1 oz. per 7 strokes
- Capacity: 26 oz.
- Buna-N seals are compatible with most oils

INCLUDED ITEMS:

- Rigid Extension and Coupler



7584/ 7584-F/ 7584-Z

Push Type Grease Gun

The 7584 gun is designed for hydraulic and flush type fittings. Provides fast-volume delivery.

FEATURES:

- Develops 4,200 psi
- Capacity: 9 oz. through loader fitting

INCLUDED ITEMS:

- (7584) Hydraulic Coupler (308730)
- (7584-F) Flush Type Nozzle (Z737)
- (7584-Z) Push Type Nozzle (Z334)



340160

Reservoir Filler Gun

The 340160 is a rotary-driven gun ideal for refilling automatic lubrication reservoirs. This fast, lightweight and convenient grease dispenser is powered by an electric drill.

FEATURES:

- Discharges grease cartridge in under one minute at 1,100 psi
- Automatic shut-off
- Compatible with most electric drills

Grease Gun Accessories

Grease Gun Accessories

Grease Gun Accessories include:

Cordless Grease Gun Accessories	53
Rigid Extensions	54
Extension Hoses.....	54
Hose Assemblies.....	55
Adapters, Extensions & Injector Needles	56
Loader Fittings and Couplers.....	59
Other Grease Gun Accessories & Grease	59