



# Reels

## Introduction

Alemite Reels are often considered the standard in the lubrication industry. Designed with the user in mind, our reels are continually tested and evaluated to ensure our customers are getting a reel they can count on. Alemite Reels are constructed using high-grade materials and assembled with utmost attention to quality.

Highly engineered to perform better, Alemite Reels are safer to maintain and operate. Our full line of reels meets the requirements of the most demanding industries. Used for a wide range of applications, Alemite Reels put lubricants and fluids within easy reach.

### Alemite Reels Include:

- Heavy Duty Reels
- Severe Duty Reels
- Narrow Double Post Reels
- Twin Hose Reels
- High-Capacity Reels
- Shielded Reels (Enclosed)
- Oxygen/Acetylene Reels
- Heavy Duty Electric Cord Reels
- Standard Duty Electric Cord Reels
- Compact Air/Water Reels
- Stainless Steel Reels
- Hand Crank Reels
- Standard Duty Light Reels
- Corrosion-Resistant Reels

For convenience, reel packages (which include hoses and accessories) have been categorized under one product number. Bare reels, hoses and accessories can be ordered separately.

### Hose Selection:

To select the proper hose or hose assembly, determine the following items:

- End fitting size and thread
- Inside diameter
- Hose length
- Construction materials
- Working pressure
- Burst pressure

### Choose from the different hose types available:

- High-pressure coupled grease hose
- Medium-pressure coupled fluid hose
- Fuel hose
- Air/Water coupled hose
- Recoil air hose assemblies
- Welding hose

#### IMPORTANT INFORMATION

NOTE: Selecting a hose with the appropriate pressure rating is critical when using hoses with air-powered equipment where rapid pressure increases can occur. For ceiling or stand-mounted hose reels, reel should not be installed at heights greater than 18' from the floor to provide optimal operation.

# Reels

## General Information

Alemite Reels include:	
Heavy Duty.....	123
Severe Duty.....	125
Narrow Double Post.....	127
High Capacity.....	128
Shielded.....	130
Oxygen/Acetylene.....	131
Heavy Duty Electric Cord .....	132
Standard Duty Light & Electric Cord.....	133
Compact Air/Water Reel.....	133
Stainless Steel .....	134
Hand Crank .....	135
Corrosion Resistant.....	136
See Also:	
Reels Accessories .....	137



# Reels

## Heavy Duty Reels

Alemite Heavy-Duty Reels offer the durability and reliability to meet the demands of today's tough working conditions. These high-quality reels are ideal for virtually any application.



**8078 series**

### FEATURES:

- Ratchet prevents lockup when hose is fully extended, eliminating the need to manually release the pawl at the reel
- Swivel and reel ball bearings reduce torque load on power spring for smooth retraction and durability
- Sealed bearings prevent contamination and minimize maintenance
- Factory lubricated one-piece power spring cassette makes installation safer and maintenance easier
- Heavy metal arbor design withstands extreme stress and eliminates breakage
- Five-position guide arm provides versatile floor, wall and ceiling mounting and allows hose to release at optimum position

### INCLUDED ITEMS:

- Hose Reel
- Hose
- Hose Stop
- Union
- Connecting Hose

Components may be purchased separately.

**Compatibility:** Water; air; oil, grease

**Pressure Configuration:** High, medium, low

**Mounting:** Wall, ceiling, floor, bench top, tank

## Air/Water Reels

Product #	Max Pressure	Bare Reel	Delivery Hose Spec.	Air Coupler	Air Adapter	Connecting Hose	Weight	Connecting Hose Inlet	Delivery Hose Outlet
8078-E	200 psi	7336-B	3/8" x 30' (317803-30)	328030	328034	317811-2	51 lb.	1/2" NPTF(m)	1/4" NPTF(m)
8078-F	200 psi	7336-B	3/8" x 50' (317803-50)	328030	328034	317811-2	53 lb.	1/2" NPTF(m)	1/4" NPTF(m)
8078-M	200 psi	7336-B	1/2" x 50' (317811-50)	328031	328033	317811-2	61 lb.	1/2" NPTF(m)	1/2" NPTF(m)

# Reels

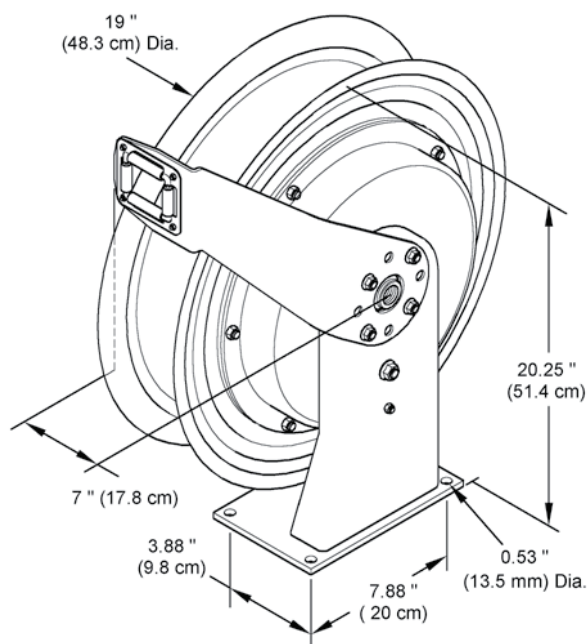
## Heavy-Duty Reels

### Oil Reels

Product #	Pressure	Bare Reel	Delivery Hose Spec.	Weight	Connecting Hose Inlet	Delivery Hose Outlet
8078-C	1,500 psi	7335-B	1/2" x 30' (317813-30)	56 lb.	1/2" NPTF(m)	1/2" NPTF(m)
8078-D	1,500 psi	7335-B	1/2" x 50' (317813-50)	58 lb.	1/2" NPTF(m)	1/2" NPTF(m)

### Grease Reels

Product #	Max Pressure	Bare Reel	Delivery Hose Spec.	Weight	Connecting Hose Inlet	Delivery Hose Outlet
8078-A*	6,400 psi	7334-B	1/4" x 30' (317874-30)	56 lb.	3/8" NPTF(m)	1/4" NPTF(f)
8078-B*	6,400 psi	7334-B	1/4" x 50' (317874-50)	59 lb.	3/8" NPTF(m)	1/4" NPTF(f)
8078-T	6,400 psi	7334-B	3/8" x 50' (317870-50)	63 lb.	3/8" NPTF(m)	3/8" NPTF(f)



#### IMPORTANT INFORMATION

\* "Z" swivel must be ordered separately



# Reels

## Severe-Duty Reels

Alemite Severe-Duty Reels provide the strength and durability you need when working in extreme conditions. These reels include all the advantages of our heavy-duty reels, plus a few more to ensure reliability under the most rigorous uses.



**8078 series**

### FEATURES:

- Ratchet prevents lockup when hose is fully extended, eliminating the need to manually release the pawl at the reel
- Swivel and reel ball bearings reduce torque load on power spring for smooth retraction and durability
- Factory lubricated one-piece power spring cassette makes installation safer and maintenance easier
- Removable rollers provide easy cleaning and service
- Heavy metal arbor design withstands extreme stress and eliminates breakage
- Heavy-duty 1/4" base is thicker and fully welded to ensure off-road stability
- Five-position guide arm provides versatile floor, wall and ceiling mounting and allows hose to release at optimum position
- Narrow design allows for maximum use of available space
- Weather-resistant gaskets and O-rings protect internal components from corrosion

### INCLUDED ITEMS:

- Hose Reel
- Hose
- Hose Stop
- Union
- Connecting Hose

Components may be purchased separately.

**Compatibility:** Water, air, oil, grease, fuel

**Pressure Configuration:** High, medium, low

**Mounting:** Wall, ceiling, floor, bench top, tank

## Air/Water Reels

Product #	Max Pressure	Bare Reel	Delivery Hose Spec.	Air Coupler	Air Adapter	Connecting Hose	Weight	Connecting Hose Inlet	Delivery Hose Outlet
8078-R	200 psi	7336-C	3/8" x 30' (317803-30)	328030	328034	317811-2	53 lb.	1/2" NPTF(m)	1/4" NPTF(m)
8078-J	200 psi	7336-C	3/8" x 50' (317803-50)	328030	328034	317811-2	55 lb.	1/2" NPTF(m)	1/4" NPTF(m)

## Fuel Reel

Product #	Pressure	Bare Reel	Delivery Hose Spec.	Connecting Hose	Weight	Connecting Hose Inlet	Delivery Hose Outlet
8078-K	300 psi	7337-C	3/4" x 30' (317868-30)	317868-2	71 lb.	3/4" NPTF(m)	3/4" NPTF(m)

## Twin Hose Reel

Product #	Pressure	Bare Reel	Delivery Hose Spec.	Connecting Hose	Weight	Connecting Hose Inlet	Delivery Hose Outlet
8078-S	3000 psi	7339	3/8" x 30' (340326-30)	317882-2	67 lb.	3/8" NPSM(f)	3/8" NPTF(m)

# Reels

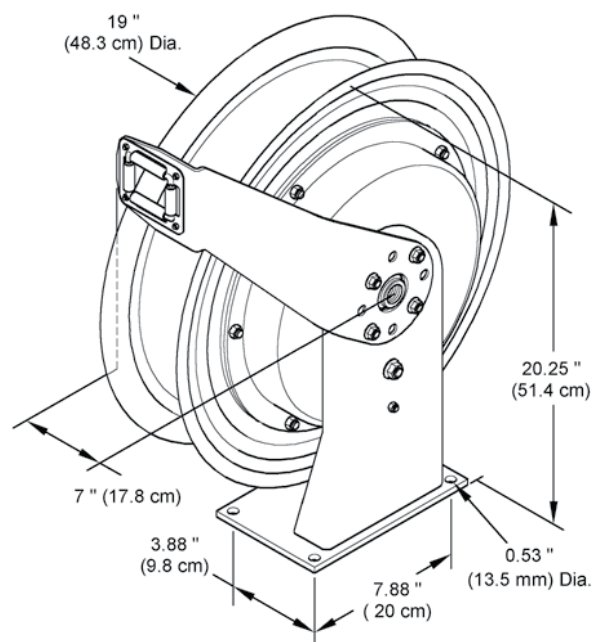
## Severe Duty Reels

### Oil Reels

Product #	Pressure	Bare Reel	Delivery Hose Spec.	Connecting Hose	Weight	Connecting Hose Inlet	Delivery Hose Outlet
8078-P	1,500 psi	7335-C	1/2" x 30' (317813-30)	317813-2	58 lb.	1/2" NPTF(m)	1/2" NPTF(m)
8078-H	1,500 psi	7335-C	1/2" x 50' (317813-50)	317813-2	60 lb.	1/2" NPTF(m)	1/2" NPTF(m)

### Grease Reels

Product #	Pressure	Bare Reel	Delivery Hose Spec.	Connecting Hose	Weight	Connecting Hose Inlet	Delivery Hose Outlet
8078-N	6,000 psi	7334-C	1/4" x 30' (317874-30)	317876-2	58 lb.	3/8" NPTF(m)	1/4" NPTF(f)
8078-G	6,000 psi	7334-C	1/4" x 50' (317874-50)	317876-2	61 lb.	3/8" NPTF(m)	1/4" NPTF(f)



#### IMPORTANT INFORMATION

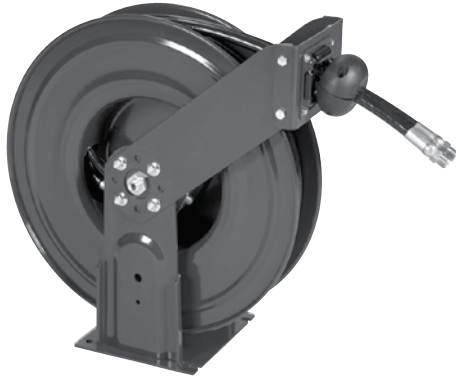
NOTE: "Z" Swivel must be ordered separately for Grease Reels



# Reels

## Narrow Double Post Reel

Alemite's dual arm hose reels are engineered for optimal durability and reliability, ensuring they will withstand the toughest outdoor applications. The dual arm design provides additional strength and stability in harsh off-road environments. The base features a narrow, space-saving footprint and slots to ensure easy mounting.



**8081 series**

### FEATURES:

- Narrow base (8.5" wide) with slot mounting holes for easy installation
- Ratchet prevents lockup when hose is fully extended, eliminating the need to manually release the pawl at the reel
- Factory lubricated sealed one-piece power spring cassette makes installation safer and maintenance easier
- Removable rollers provide easy cleaning and service
- Heavy metal arbor design withstands extreme stress
- Five-position guide arm provides versatile floor, wall and ceiling mounting and allows hose to release at optimum position
- The ratchet pawl cartridge allows for fast serviceability

**Compatibility:** Water, air, oil, grease, diesel fuel, hydraulic fluid

**Mounting:** Wall, ceiling, floor, bench top, tank

**Applications:** Municipalities, service trucks, mining, golf courses, automotive service centers, fleet and aircraft maintenance facilities

Product #	Description	Bare Reel	Delivery Hose Spec.	Reel Inlet	Delivery Hose Outlet	Hose Stop	Pressure
8081-A	1/4" x 30' High Pressure Hose Reel Assembly	7370	317874-30	3/8" NPSM(m)	1/4" NPTF(f)	337437	6,500 psi
8081-B	1/4" x 50' High Pressure Hose Reel Assembly	7370	317874-50	3/8" NPSM(m)	1/4" NPTF(f)	337437	6,500 psi
8081-C	1/2" x 40' Medium Pressure Hose Reel Assembly	7371	317813-40	1/2" NPSM(m)	1/2" NPTF(m)	337437	1,800 psi
8081-D	1/2" x 50' Medium Pressure Hose Reel Assembly	7371	317813-50	1/2" NPSM(m)	1/2" NPTF(m)	337437	1,800 psi
8081-E	3/8" x 40' Low Pressure Hose Reel Assembly	7372	317803-40	1/2" NPSM(m)	1/4" NPFT(m)	337437	200 psi
8081-F	3/8" x 50' Low Pressure Hose Reel Assembly	7372	317803-50	1/2" NPSM(m)	1/4" NPTF(m)	337437	200 psi
8081-G	1/2" x 50' Low Pressure Hose Reel Assembly	7371	317811-50	1/2" NPSM(m)	1/2" NPTF(m)	337437	200 psi
8081-H	3/8" x 30' High Pressure Hose Reel Assembly (Twin Hose)	7374	340326-30	3/8" NPSM(m) (both inlets)	3/8" NPTF(m)	339389-3	3,000 psi
8081-J	3/8" x 50' High Pressure Hose Reel Assembly	7370	317870-50	3/8" NPTF(m)	1/4" NPTF(f)	337437	4,000 psi
8081-K	3/4" x 30' Low Pressure Fuel Reel Assembly	7373	317868-30	3/4" NPSM(m)	3/4" NPTF(m)	339389	200 psi

# Reels

## High-Capacity Reels

Alemite High-Capacity Reels offer high-volume delivery in the most severe outdoor conditions. These high-capacity reels are corrosion resistant and extremely reliable.



**8080-B**

### FEATURES:

- Sealed spring cassette protects the power spring from corrosion caused by water and dirt
- Sealed rollers eliminate contamination that can bind the hose guide rollers
- Superior bearing performance reduces torque load on power spring for smooth retraction and durability
- Outlet port swivel nut makes installing the delivery hose quick and easy
- Adjustable arm allows for mounting on a floor, ceiling or wall
- Narrow width allows for more reels to be mounted along a truck bed
- Double arm provides extra support for a larger hose during use. Four-corner bolt hole pattern on outside of base provides extra stability
- High-volume capacity flow passage reduces fill rate time and improves efficiency
- Capable of handling up to 100' of 1/2" diameter hose or up to 50' of 1" diameter hose
- Lifetime warranty on hose guide assembly

### INCLUDED ITEMS:

- Reel
- Delivery Hose
- Hose Stop

**Compatibility:** Water, air, oil, fuel

**Pressure Configuration:** High, medium, low

**Mounting:** Floor, wall, ceiling, truck bed

### Air/Water Reels

Product #	Pressure	Bare Reel	Delivery Hose Spec.	Weight	Reel Inlet	Delivery Hose Outlet
8080-C	300 psi	7341	1/2" x 80' (317811-80)	115 lb.	1/2" NPTF(f)	1/2" NPTF(m)
8080-D	300 psi	7341	1/2" x 100' (317811-100)	125 lb.	1/2" NPTF(f)	1/2" NPTF(m)

### Oil Reels

Product #	Pressure	Bare Reel	Delivery Hose Spec.	Weight	Reel Inlet	Delivery Hose Outlet
8080-B	1,500 psi	7341	1/2" x 80' (317813-80)	125 lb.	1/2" NPTF(f)	1/2" NPTF(m)
8080-H	1,500 psi	7341	1/2" x 100' (317813-100)	154 lb.	1/2" NPTF(f)	1/2" NPTF(m)





# Reels

## High-Capacity Reels

### Grease Reel

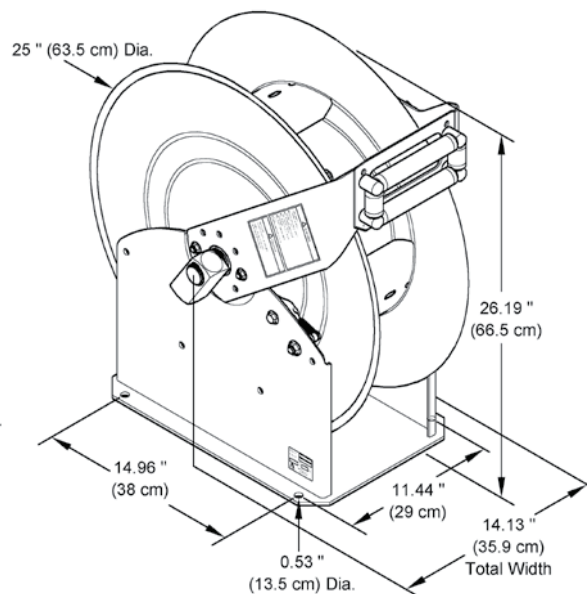
Product #	Pressure	Bare Reel	Delivery Hose Spec.	Weight	Reel Inlet	Delivery Hose Outlet
8080-A*	6,000 psi	7340	3/8" x 80' (317870-80)	120 lb.	3/8" NPTF(m)	1/4" NPTF(f)

### Fuel Reels

Product #	Pressure	Bare Reel	Delivery Hose Spec.	Weight	Reel Inlet	Delivery Hose Outlet
8080-E	1,000 psi	7342	3/4" x 50' (317868-50)	145 lb.	1" NPTF(f)	3/4" NPTF(f)
8080-F	1,000 psi	7342	3/4" x 70' (317868-70)	155 lb.	1" NPTF(f)	3/4" NPTF(f)
8080-G	1,000 psi	7342	1" x 50' (317869-50)	165 lb.	1" NPTF(f)	1" NPTF(f)
8080-J	150 psi	7342	1" x 50' (339634-50)	165 lb.	1" NPTF(f)	1" NPTF(f)

### Twin Hose Reels

Product #	Pressure	Bare Reel	Delivery Hose Spec.	Weight	Connecting Hose Inlet	Delivery Hose Outlet
8080-K	3,000 psi	7343	3/8" x 80' (340326-80)	165 lb.	3/8" NPSM(f)	3/8" NPSM(m)
8080-L	3,000 psi	7344	1/2" x 80' (340328-80)	180 lb.	1/2" NPSM(f)	1/2" NPTF(m)



#### IMPORTANT INFORMATION

\* "Z" swivel must be ordered separately

# Reels

## Shielded Reels

Alemite Shielded Reels are ideal for when your workplace is in view of customers and a clean appearance is expected. These reels offer looks and performance to meet the needs of your shop. Placed together in a bank, Alemite Shielded Reels feature a track system for easy installation.



**8079-A**

### FEATURES:

- Side panels are constructed of ABS Polymer for impact and stain resistance
- Attractive casing offers enhanced eye appeal
- Track system makes installation of reels quick and easy
- Roller guides are attached to the hose reel for convenient servicing

**Compatibility:** Water, air, oil, grease

**Pressure Configuration:** High, medium, low

**Mounting:** Ceiling

Product #	Description	Pressure	Bare Reel	Delivery Hose Spec.	Connecting Hose	Weight	Connecting Hose Inlet	Delivery Hose Outlet
8079-A*	Grease Hose Reel	6,000 psi	7334-D	1/4" x 30' (317874-30)	317876-2	73 lb.	3/8"(m)	1/4"(f)
8079-B*	Grease Hose Reel	6,000 psi	7334-D	1/4" x 50' (317874-50)	317876-2	76 lb.	3/8"(m)	1/4"(f)
8079-C	Oil Hose Reel	1,500 psi	7335-D	1/2" x 30' (317813-30)	317813-2	73 lb.	1/2"(m)	1/2"(m)
8079-D	Oil Hose Reel	1,500 psi	7335-D	1/2" x 50' (317813-50)	317813-2	75 lb.	1/2"(m)	1/2"(m)
8079-E	Air/Water Hose Reel	300 psi	7336-D	3/8" x 30' (317803-30)	317811-2	68 lb.	1/2"(m)	1/4"(m)
8079-F	Air/Water Hose Reel	300 psi	7336-D	3/8" x 50' (317803-50)	317811-2	70 lb.	1/2"(m)	1/4"(m)

130

## Cabinets

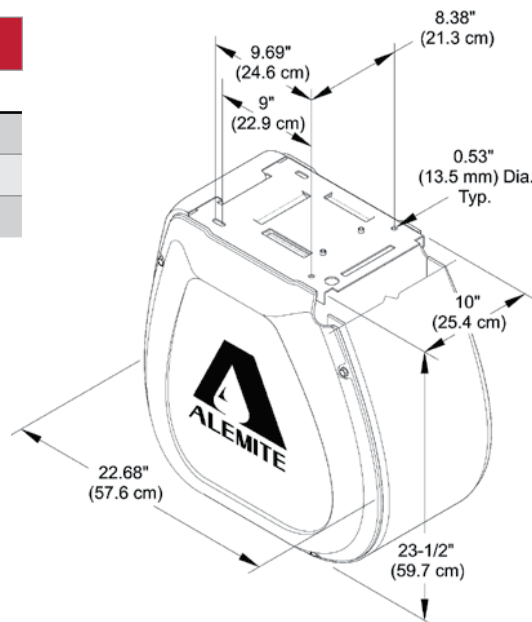
Product #	Description	Weight
7331	Cabinet kit for one cabinet hose reel	10.5 lb.
339371	End panels for one bank of cabinet hose reels	5.4 lb.
339368	Strut for single reel installation	N/A



**7331**



**339371**



### IMPORTANT INFORMATION

\* Order Swivel separately

NOTE: When ordering shielded reels, the cabinets and panels must be ordered separately as shown in the Cabinets table above. Order a separate cabinet for each reel. The reel product number only includes the reel and hose specified. It does not include the cabinets or panels.



# Reels

## Oxygen/Acetylene Reels

Alemite Oxygen/Acetylene Reels are engineered with safety and ease of maintenance in mind. These high-quality reels are designed to safely handle volatile elements and improve your welding or cutting operation by eliminating the hazards of loose hose.



**FEATURES:**

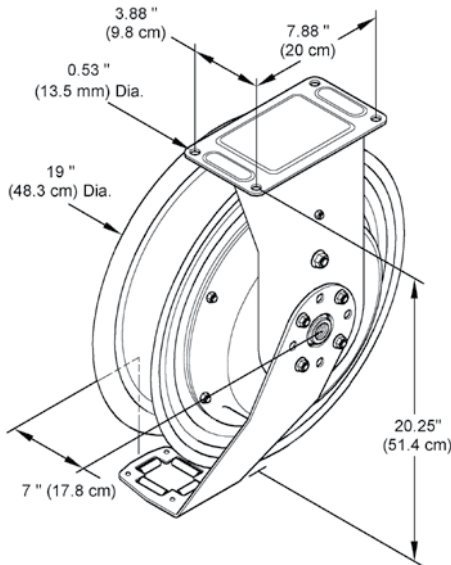
- Ratchet prevents lockup when hose is fully extended, eliminating the need to manually release the pawl at the reel
- Swivel and reel ball bearings reduce torque load on power spring for smooth retraction and durability
- Sealed bearings to prevent contamination and minimize maintenance
- Heavy metal arbor design withstands extreme stress and eliminates breakage
- Five-position guide arm allows floor, wall or ceiling mounting and enables hose to release at optimum position
- Factory-lubricated one-piece power spring cassette makes installation safer and maintenance easier
- UL listed

**Compatibility:** Oxygen/Acetylene only

**Pressure Configuration:** Low

**Mounting:** Floor, wall, ceiling, truck bed, workbench

Product #	Description	Bare Reel	Delivery Hose Spec.	Weight	Oxy & Ace Inlets	Delivery Hose Connections
8071-A	200 psi Heavy-Duty Oxy/Ace Hose Reel	7338-B	1/4" x 30' (339539-30)	54 lb.	1/4" NPTF(f)	9/16-18"(f) Threads
8071-B	200 psi Heavy-Duty Oxy/Ace Hose Reel	7338-B	1/4" x 50' (339539-50)	56 lb.	1/4" NPTF(f)	9/16-18"(f) Threads
8071-D	200 psi Severe-Duty Oxy/Ace Hose Reel	7338-C	1/4" x 50' (339539-50)	57 lb.	1/4" NPTF(f)	9/16-18"(f) Threads



# Reels

## Heavy Duty Electric Cord Reels

Alemite Heavy Duty Electric Cord Reels ensure your cords are within an arm's reach, but out of the way. By minimizing the hazards of dangling electrical cords, these reels improve safety, convenience and productivity.

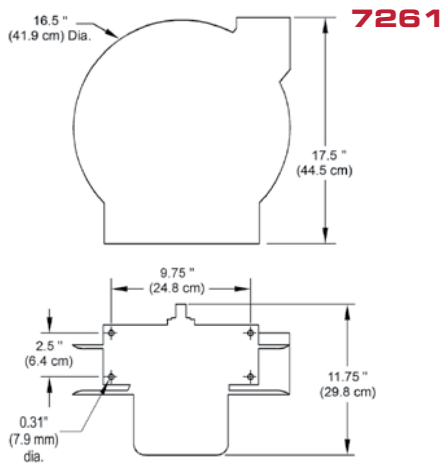
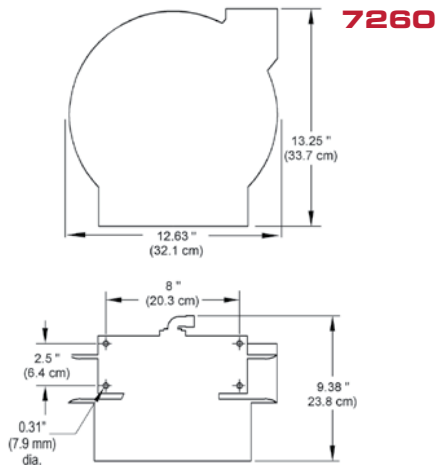


### FEATURES:

- Adjustable roller guide arm with nylon guide rollers reduces drag and wear
- Adjustable bumper stop allows any desired length of cord to be maintained outside the reel
- Automatic spring retraction for quick cord rewind
- Steel construction for optimal reliability in industrial applications
- Reel drive springs manufactured from high-quality scaleless blue tempered steel
- UL listed and CSA certified

**Mounting:** Wall, floor, ceiling, bench top, truck

Product #	Outlet	Cord Size	Number of Conductors	Cord Length	Volts	Ampere	Weight
7260	Duplex with GFCI	12 gauge (3.32 mm)	3	45' (14 m)	115V	20 amp	30 lb. (14 kg)
7261	RV Plug	10 gauge (5.37 mm)	3	50' (15 m)	115V	35 amp	47 lb. (22 kg)



### IMPORTANT INFORMATION

**NOTE:** For indoor, non-weather tight applications only

### WARNING

7260 and 7261 Series:

A Ground Fault Circuit Interrupter is designed for protection from line-to-ground shock hazards. These could occur from defective power tools or appliances operating from this device or from down-line outlets protected by this device.

The GFCI is not designed to protect against short circuits or overloads. That type of protection is the function of the fuse or circuit breaker.

Individuals who suffer from heart problems or other conditions that make them susceptible to electric shock are still in danger of being injured by ground faults on circuits protected by the GFCI receptacle. No safety device has the capability to protect against all hazards or carelessly handled electrical equipment.



# Reels

## Standard Duty Light and Electric Cord Reels

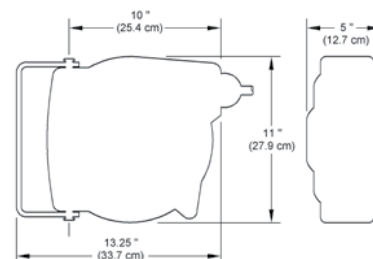
Alemite Standard Duty Electric Cord Reels ensure your cords are within an arm's reach, but out of the way. By minimizing the hazards of dangling electrical cords, these reels improve safety, convenience and productivity.



### FEATURES:

- Tangle-free encased cord for easy winding and safe storage
- Spring retractable with latch
- High-quality, impact-resistant polypropylene case
- Adjustable cord stop with dual roller non-snag cord guide
- Convenient 180° swivel
- UL and CUL listed
- 7262-B has grounded North American outlet in handle

**Mounting:** Wall, ceiling



Product #	Cord Size	Conductors	Cord Length	Volts	Ampere	Weight	Other Info.
7262-A	12 gauge	3	40'	125V	15 amp	15.4 lb.	Triple outlets
7262-B	16 gauge	3	50'	125V	10 amp	13 lb. (5.8 kg)	Fluorescent

## Compact Air/Water Reel

This spring-driven, self-retracting air/water reel features a rugged housing and pivoting mounting bracket. This lightweight reel is ideal for dispensing washer fluids or antifreeze.



### FEATURES:

- 52 feet of 5/16" diameter polyurethane delivery hose
- Spring-driven retractable hose
- Lightweight and rugged molded housing for durability
- Pivoting mounting bracket for ease of use
- Includes hose stop, inlet and outlet hose and low-pressure swivel assembly

**Mounting:** Wall or ceiling with pivot

Product #	Inside Diameter	Length	Thread Size Inlet / Outlet	Reel Port Inlet Swivel/Outlet	Max. Pressure	Temp. Range
8051-1	5/16"	52'	1/4" NPT(f) / 1/4" NPT(m)	3/8" NPT(f) / 1/4" NPT(m)	218 psi	23° to 104° F

### IMPORTANT INFORMATION

NOTE: 7262 series for indoor, non-weather tight applications only.

### WARNING

7262 Series: Not for use above hazardous locations or near flammable vapors.

# Reels

## Stainless Steel Reels

Alemite Stainless Steel Reels are designed for industries in which hygiene and quick cleanup are critical. These reels are engineered to provide years of trouble-free operation and easy maintenance.



### FEATURES:

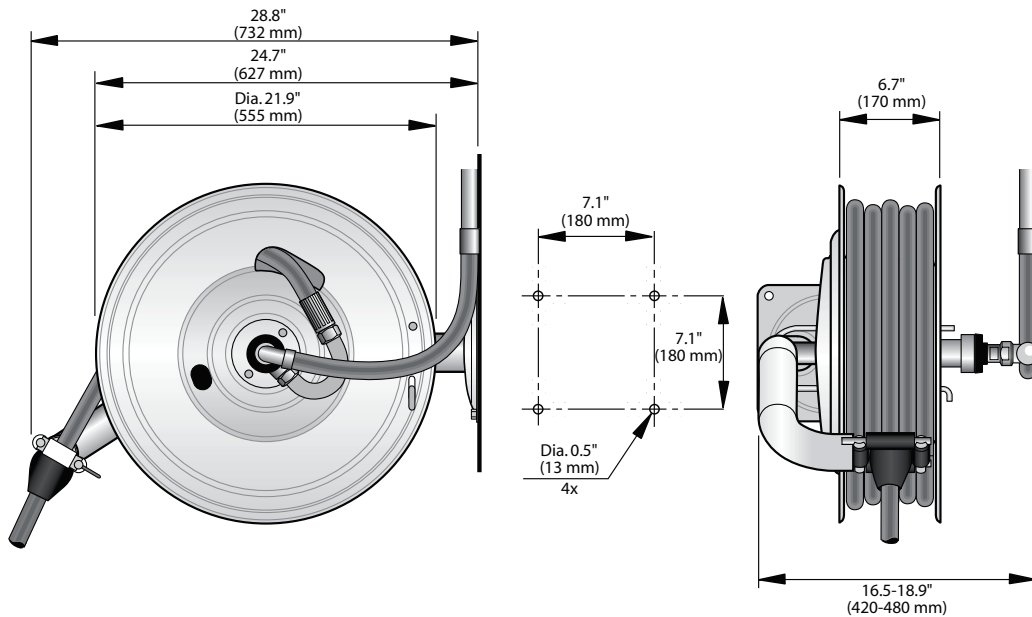
- Ratchet locks hose into position
- Spring and ratchet are protected by drum
- Minimum number of joints and smooth, sloping surfaces simplify maintenance and allow for easy cleaning
- Double bearings and “cross-curved” spring material for safe, reliable operation

**Compatibility:** Water, oils, certain corrosive chemicals, grease

**Pressure Configuration:** High, medium

**Mounting:** Wall, ceiling, floor

Product #	Pressure	Max. Hose Capacity	Weight	Reel Inlet *	Reel Outlet *
7250-A	1,450 psi	1/2" x 82'	36 lb.	1/2" NPTF(m)	1/2" NPTF(m)
7250-B	2,600 psi	3/8" x 82'	36 lb.	3/8" NPTF(m)	3/8" NPTF(m)



### IMPORTANT INFORMATION

\*With 30° internal seat for NPSM(f) swivel connection

NOTE: Does not include hose



# Reels

## Hand Crank Reels

Alemite Hand Crank Reels are designed for heavy-duty applications that require long hose lengths. Ideal for industrial or outdoor use, these reels are engineered to provide trouble-free performance and long product life.



### FEATURES:

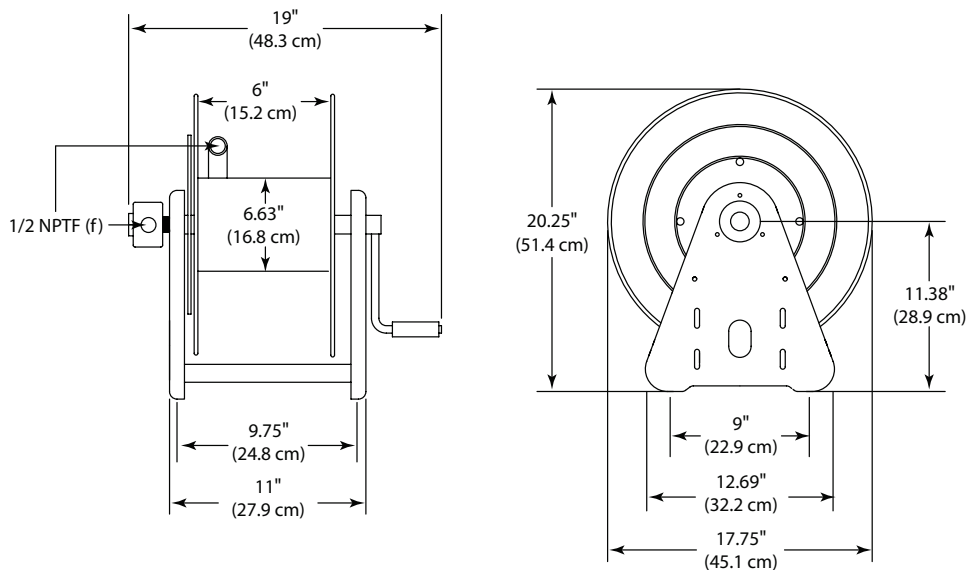
- Adjustable spool rotation drag eliminates hose backlash when de-reeling
- Nickel-plated swivel with Viton® O-Ring seals
- Full flow shaft and ball bearing swivel
- Permanently lubricated dual main bearings
- Motor mounting at either end of reel
- Durable powder coat finish (red)
- All bolted construction – no welds
- Lock pin to prevent spool rotation when the reel is not in use
- Temperature operating range from -20°F to 250°F (-29°C to 121°C)
- Vibration-proof self-locking fasteners ensure assembly integrity
- Manual driven reels are easily converted to power-driven types
- Unitized spool construction
- Steel drum

**Compatibility:** Water, oil, fluid

**Pressure Configuration:** Low

**Mounting:** Floor, bench, wall, truck

Product #	Pressure	Max. Hose Capacity	Weight	Reel Inlet	Reel Outlet
7350	1,000 psi	1/2" x 100'	12 lb.	1/2" NPTF(f)	1/2" NPTF(f)

**135**


### IMPORTANT INFORMATION

NOTE: Does not include hose

# Reels

## Corrosion-Resistant Aluminum Reels

Alemite Corrosion-Resistant Aluminum Reels are constructed with die-cast aluminum for superior strength and durability. Their heavy-duty design and compatibility with long, heavy hoses makes them an ideal choice for the toughest applications.

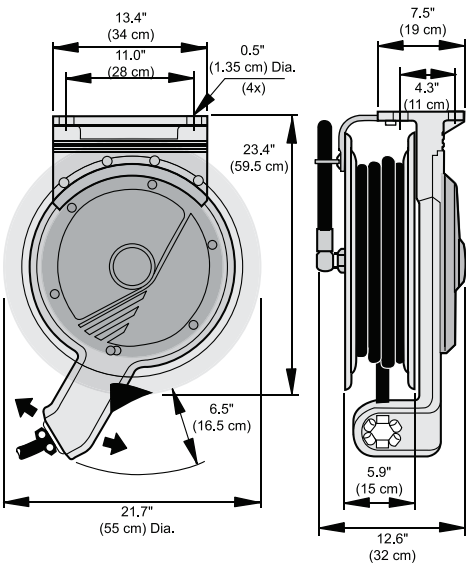


7254-A

- FEATURES:
- Drum and swivel feature ball bearings to reduce friction and wear
  - Spring and bearings are protected by a plastic cover
  - Outlet arm is adjustable to provide optimal pull-out angle for hose, minimizing friction
  - Ratchet locks hose at desired length; hose is easily released by gentle pulling motion

**Compatibility:** Water, air, oil, diesel  
**Pressure Configuration:** High, medium, low  
**Mounting:** Wall, ceiling, floor

Product #	Inlet/Outlet *	Max. Hose Length	Pressure	Application	Weight
7254-A	1/2" NPTF(m)	98' (1 1/2" Dia.)	725 psi	Air/Water/Oil	32 lb.
7254-B	3/4" NPTF(m)	50' (15m) (3/4" Dia.)	725 psi	Diesel/Oil	32 lb.



IMPORTANT INFORMATION

\*With 30° internal seat for NPSM(f) swivel connection  
NOTE: Does not include hose





# Reel Accessories

## Reel Accessories include:

Hose Reel Hose Stops .....	138
Swivels .....	138
High-Pressure Grease Hoses.....	139
Medium-Pressure Hoses.....	140
Low-Pressure Air & Water Hoses.....	141
Recoil Air Hoses.....	142
Fuel Hoses .....	142
Welding Hoses .....	142
Twin Hoses .....	142