

Two Filter Carts in One!

When you need multiple filter carts but, don't have the budget or the space, look no further than the TH-D Tandem cart. This cart is two filter carts in one which allows you to filter two different oil types using a single cart - saving time and money. Extremely mobile, this filter cart has all the power needed for filtering oil viscosities up to 600cSt (ISO VG 680) at 100°F within ambient temperature ranges of -15°F to 150°F.

Typical Applications

- Filtering contaminated systems
- Flushing new or repaired systems
- Pre-filtering new oil
- Transferring oils
- Topping off reservoirs
- Collecting oil samples for analysis
- Dispensing new oil



D Series Tandem Filter Cart

D Series Tandem Filter Cart

Don't see the options you need? Contact LubriSource at
(937) 432-9292 or info@lubrisource.com

Performance:

For filtering mineral and synthetic based oils (hydraulic oils, gear oils and turbine oils) with a maximum operating viscosity range of ISO VG 680 (3000ssu/648cSt) at 100°F within ambient temperature ranges of -15°F to 150°F.

Standard Features:

Materials:

- Frame: Carbon steel
- Paint: Multiple color options available
- Motor: 1HP, 115vac, 60Hz or Pneumatic
- Filter Heads: Medium pressure, cast aluminum heads
- Pump: Heavy duty, cast steel gear pump. Available in 1, 2, 5 and 10 GPM
- Connections: Various quick connect options available
- Hoses: 7ft. Clear PVC, steel reinforced hose or hydraulic hose
- Power Switch: Sealed On/Off Power Switch

Filter Indicators:

- Slide bar indicator triggers at 50psid when elements need to be changed.

Pump Relief:

- Opens at 150psi

Weight:

- Approx. 200lbs (will vary depending on options)

Dimensions:

- Approx. 23"L x 22"W x 52"H

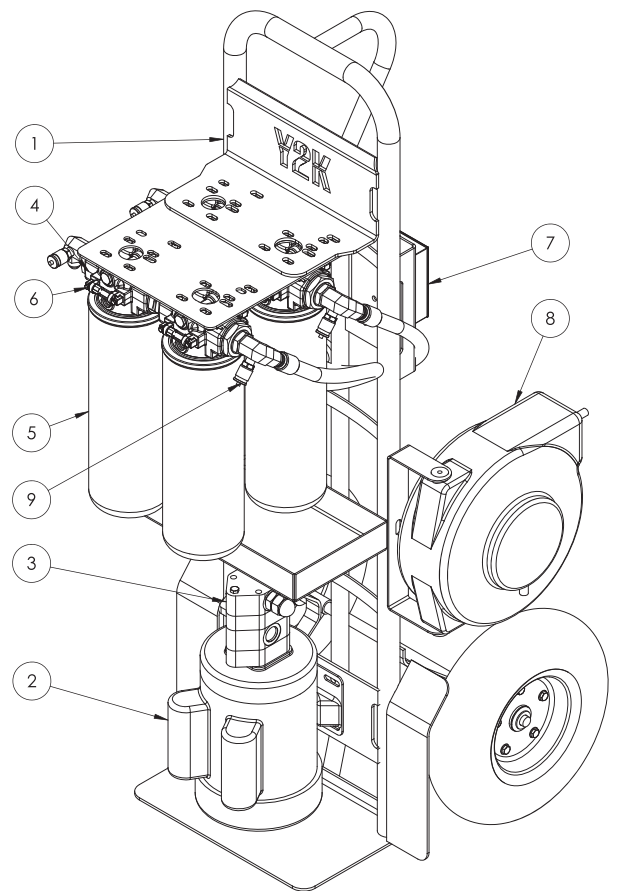
Replacement Elements:

Part Number	BETA Rating	Desired Cleanliness Level (ISO Code)
P1066	β ₄ (c)=2000	14/12/9 - 13/11/8
P1065	β ₇ (c)=2000	18/16/13 - 15/13/10
P1063	β ₁₀ (c)=1000	19/17/14 - 18/16/13
P1064	β ₂₅ (c)=2000	20/18/15 - 19/17/14
P1048WR	Water Removal	

All D Series elements measure 5" x 14".

Components:

Item Number	Description	Qty.
1	Frame	1
2	Motor	1
3	Pump	1
4	Filter Head	4
5	Filter Element	4
6	Filter Indicator	4
7	Switch On/Off	1
8	Cord Reel	1
9	Filter Selector Valve	1



623 Congress Park Drive Dayton, OH 45459 | (937) 432-9292 | www.lubrisource.com